

# Managing Floating Licenses

## MANUAL

## Managing Floating Licenses - USER GUIDE

<b>I. Overview</b>	<b>3</b>
A. Getting Started	3
1. Server Side	3
2. Client Side	4
<b>II. Getting Up and Running</b>	<b>4</b>
A. Installing the Cambria Floating License Server	4
B. Connecting Clients to the Floating Server	5
C. Debugging Client Connections to the Server	6
D. Checking Status on the Floating Server Manager	7
<b>III. Ongoing Operations</b>	<b>8</b>
A. Deactivating or Modifying a Client	8
B. Controlling licenses at the Server	10

## I. OVERVIEW

Capella Systems has implemented a floating license schema that allows customers to run any Capella program on different physical or cloud-based computers. The basic schema involves two components:

- **The Capella Floating License Server installed on a non-virtual machine.** This server tracks licensed products and manage these licenses among the Client machines.
- **Capella Activation Tool.** This tool is installed with all Capella Systems Client products and is used to connect to the Capella Floating License Server and obtain a license to run the software.

Note that you'll need the Server **online** to run your Capella Systems' programs. If you'll need offline operation for your Client, or your server won't be online 24/7, a floating license system may not be the best option for you.

### A. Getting Started

Here are some items to consider before getting started.

#### 1. Server Side

- a. The server software must be installed on a physical (non-virtual) machine running Windows 7, Windows 10, or Windows Server 2012 R2.
- b. A single computer can be both a Server and a Client so long as it isn't virtual. Most customers install the Server component on a physical workstation in their offices.
- c. All Clients must be able to communicate with the Server, so firewalls can be an issue.
- d. Make sure the following Port Forwarding TCP/UDP Ports: **8090-8094 and 8687-8696** with the machines internal IP address have been set up on your firewall and also the public IP of the server is white-listed on both Server and Client side.
- e. Before getting started, make sure you have both an Activation key and Client key. You'll need both to install the server, and the Client key to connect Clients to the Server.
- f. To ensure the continued operation of existing Clients, consider installing the Server and Client on computers not running Capella Systems software, and confirming operation before you change the licensing schema for any software on existing operational Client computers.

## 2. Client Side

- a. To use floating licenses, all other licensing methods like hardware dongle or software license files **MUST** be removed from the Client machine. **So, uninstall any license-related Capella software before getting started.**
- b. If you installed the Client software using either the dongle or software license files, or simply haven't upgraded recently, the Capella Activation Tool may not be installed. To obtain this tool, uninstall your Client software after uninstalling the licensing-related software in step a, and then reinstall the latest version.
- c. As mentioned above, you can install the Server and Client software on the same machine, so long as it isn't virtual.
- d. Remember that you'll need the Client Key to connect to the License Server once you start activating the Clients. If you'll be sending instructions to remote users, remember to include the Client Key.

## II. GETTING UP AND RUNNING

### A. Installing the Cambria Floating License Server

- 1. **Download and install the Cambria Floating License Server.** You can download the Floating Server application at [https://www.dropbox.com/s/i36gtvnlbxoe1ro/FloatingServer\\_38443.zip](https://www.dropbox.com/s/i36gtvnlbxoe1ro/FloatingServer_38443.zip). Extract and install as normal.
- 2. **Run the Cambria Floating Server Activator.** From the Start menu, Choose the Capella Floating Server Activator (Figure 1). The Capella Floating License Server Activator opens (Figure 2).

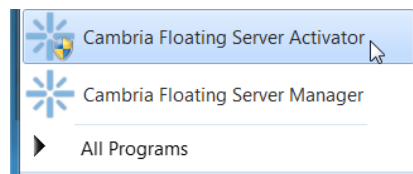


Figure 1. Running the Cambria Floating Server Activator

- 3. **Activate the Server.** Enter your keys into the respective windows and click Activate (Figure 2).

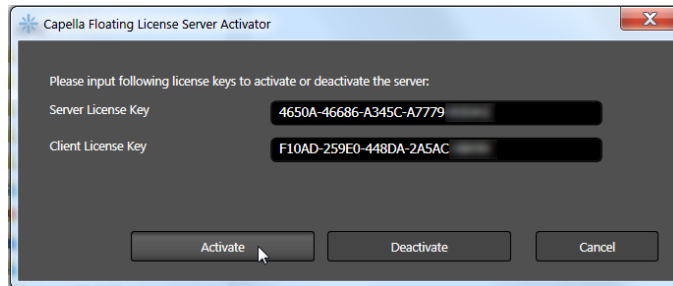


Figure 2. Activating the Cambria Floating License Server Activator.

It will take a few moments to activate your Floating Server, after which you'll see the message shown in Figure 3.

4. **Close the dialog.** Click Done to close the dialog.

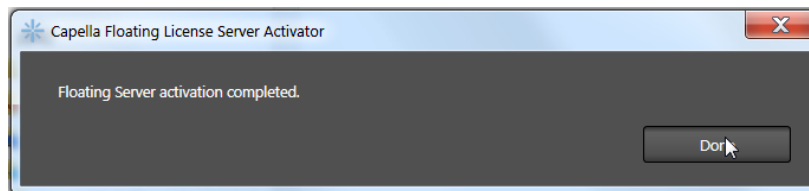


Figure 3. The Server is activated, click Done to close the dialog.

***Deactivating the Server: Should you need to deactivate the server, perhaps so you can install it on another computer, follow the instructions shown in Figures 2 and 3, but click Deactivate rather than Activate.***

## B. Connecting Clients to the Floating Server

After installing the Server software, follow this procedure to connect Clients to the Server. Make sure you have the Client Key available before getting started, and that you've uninstalled any license-related Capella Systems software.

1. **Run the Capella Activation Tool.** On each Client, click the Start menu and choose Capella Activation Tool. The Capella Activation Tool opens (Figure 5).

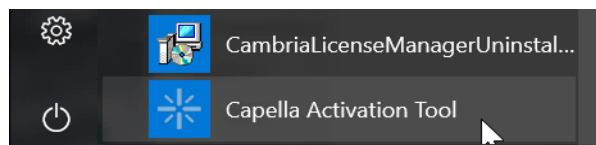


Figure 4. Running the Capella Activation Tool.

If you don't see this application, it's most likely because you originally installed the program using a different license technique or simply have an older version installed. Remedy this by uninstalling and reinstalling.

- 2. **Enter the Client Key.** Enter the Client Key into the dialog and click Next (Figure 5).

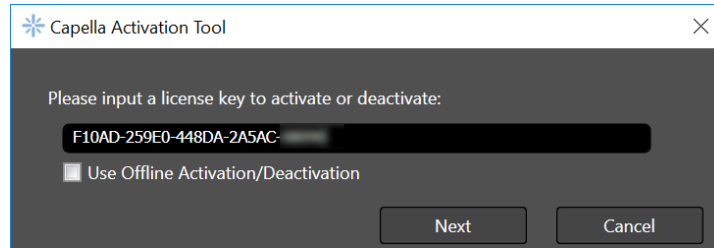


Figure 5. Entering the client key into the Capella Activation Tool.

**About Offline Activation/Deactivation:** Use this license schema if you need offline operation. Contact your Capella Systems service representative for details and to obtain offline activation.

- 3. **Enter the Server Address.** Enter the server URL. If you'd like, you can click Connection Test to test the connection. Or click OK.

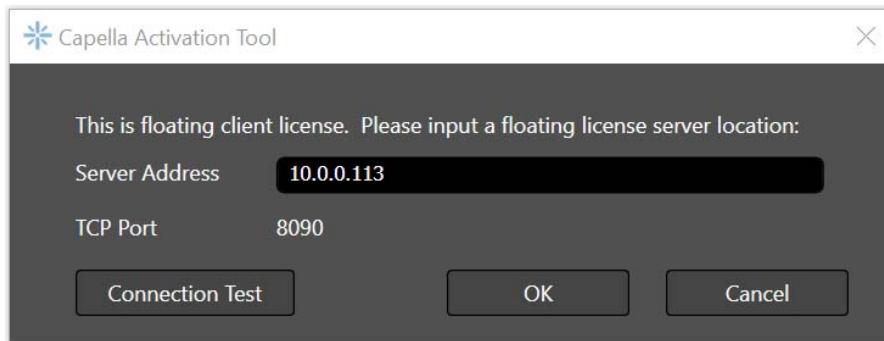


Figure 6. Connecting to the Server.

- 4. **Close the Dialog.** Assuming everything is configured correctly, you should see the dialog shown in Figure 7. Cambria Floating License Server can have up to 30 different server ports, and thus can support up to 30 different license combinations.

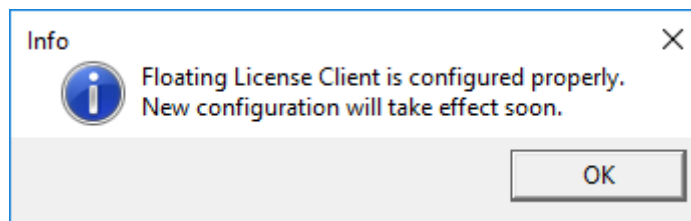


Figure 7. You've configured the Client successfully. Click OK to close the dialog.

### C. Debugging Client Connections to the Server

After performing the steps above, you should be able to use your Client software as normal. If not, the first step is to check the status in the Capella License Manager on the Client computer. Here's how to do so.

1.     **Find and double click the Capella License Manager icon.** On the bottom right of the Windows desktop, double click the Capella License Manager icon (Figure 8). You may have to open the Windows Tray to view the icon. The Capella License Manager opens (Figure 9).

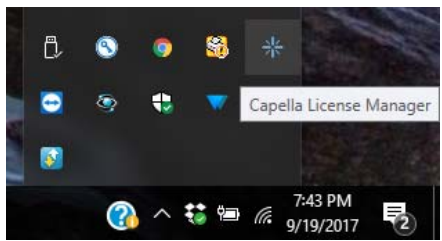


Figure 8. Find the Capella License Manager icon.

2.     **Check status in the Capella License Manager (Figure 9).** If the license is working correctly, you should see a message like that shown in Figure 9. If the license is not working correctly, keep the window open and contact your system administrator or Capella Systems customer support representative.

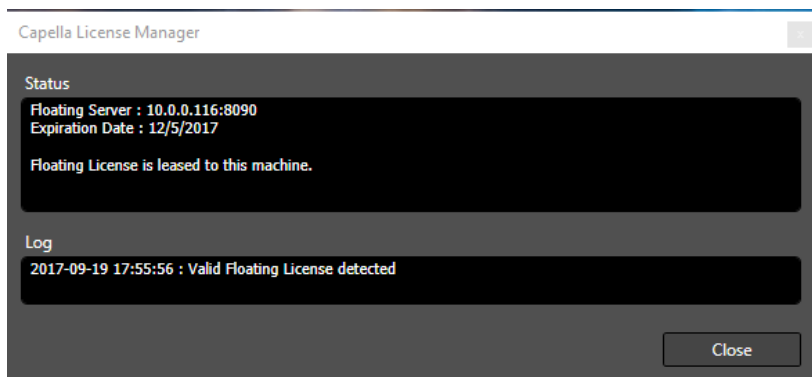


Figure 9. Capella License Manager showing that the floating license is leased to the Client.

#### **D.    Checking Status on the Floating Server Manager**

By this point, you will have one or more Clients connected to the Server. Here’s how to open the Floating Server Manager and check status.

1.     On the computer running the Cambria Floating License Server, click the Start menu and choose Cambria Floating Server Manager (Figure 10). The Capella Floating Server Manager opens (Figure 11).

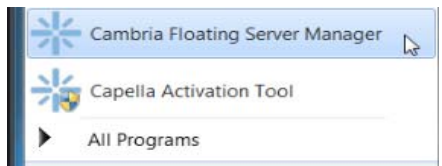


Figure 10. Running the Cambria Floating Server Manager.

**2. Check status in the Capella Floating Server Manager (Figure 11).** Figure 11 shows the Clients connected to the Server and which connections have Leased licenses. The top of the Server Manager also shows the Server State and number of available and leased licenses. The bottom contains a log that will record when you enable, disable, or delete a Client.

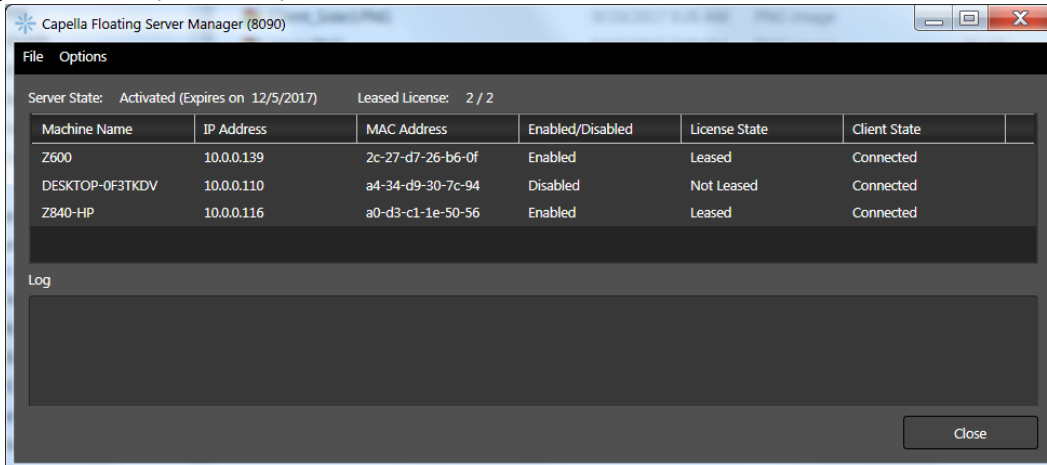


Figure 11. The Capella Floating Server Manager showing connections and license status.

### III. ONGOING OPERATIONS

Each time a Client machine shuts down, the Server Manager automatically releases its license. Each time the Client restarts, it will attempt to renew the license, which may not be the desired option. In the first lesson below, you'll learn how to stop this operation. In that lesson, you'll also learn how to modify a Client, which may be necessary if your Server's IP address changes.

At times, you may also need to disable certain licenses so that other Clients can run the Capella Systems software, say if an unattended machine is left running in a remote office, and you want to start operation on a different Client. In the second lesson below, you'll learn how to control this in the Capella Floating Server Manager.

#### A. Deactivating or Modifying a Client

**1. Run the Capella Activation Tool.** On each Client, click the Start menu and choose the Capella Activation Tool. The Capella Activation Tool opens (Figure 13).

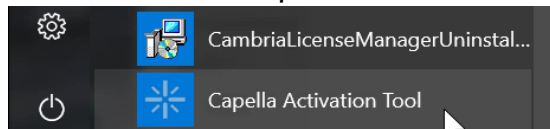


Figure 12. Running the Capella Activation Tool.



2. **Click Next to view your options.** If the Client is licensed, it will include the license key in the appropriate field. Click Next to view your options.

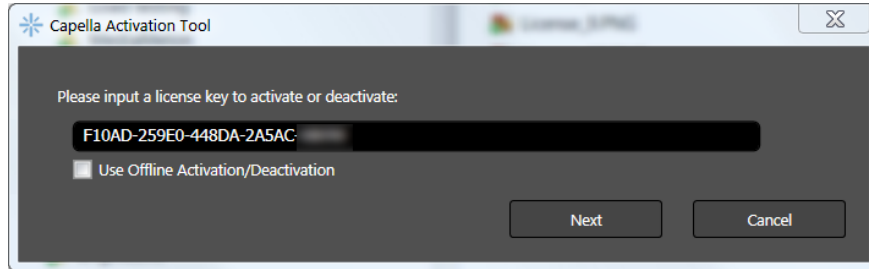


Figure 13. The Capella Activation Tool. Click Next.

3. **Click Clean up to deactivate the license (Figure 14).** This removes the license key and server information, so the Activation Tool won't reactivate until you reenter this information.

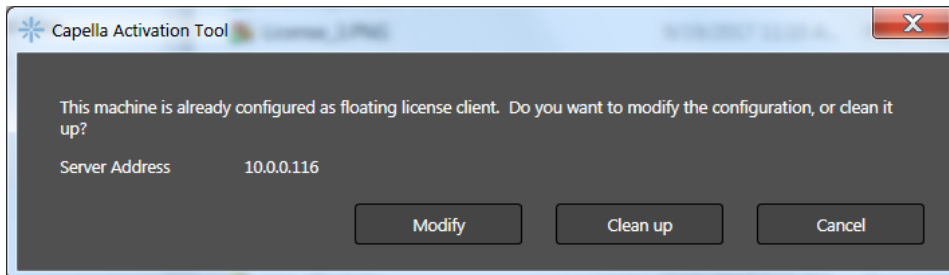


Figure 14. Click Clean up to deactivate the license.

4. **Change the Server Address.** Click Modify to reenter the Server Address and test the connection (Figure 15).

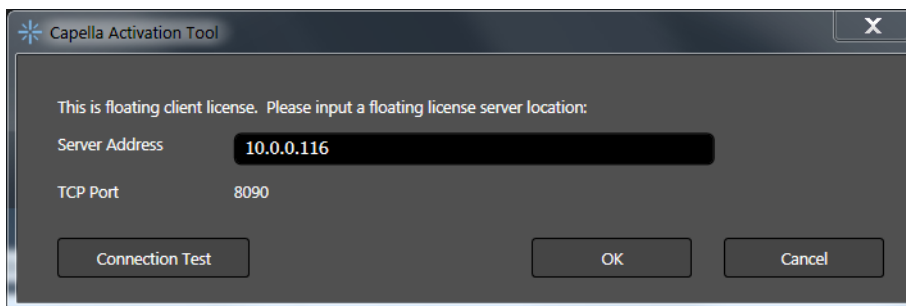


Figure 15. Re-entering the Server Address.

5. **Reactivate the license.** Click OK to reactivate the license. A status message will advise whether you were successful or unsuccessful.

## B. Controlling Licenses at the Server

Follow the instructions presented above in the section entitled Checking Status on the Floating Server Manager and Open the Capella Floating Server Manager.

- To disable/enable a Client.** To disable a Client with a leased license in the Capella Floating Server Manager, right click the Client and choose Disable. To enable a Client that has been disabled, right click the Client and choose Enable.

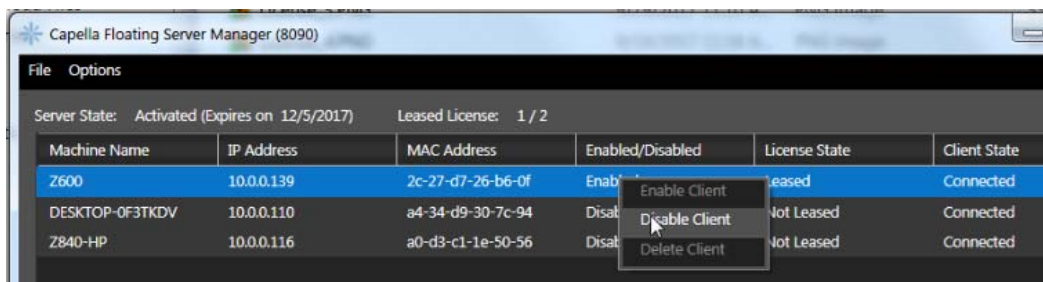


Figure 16. Enabling or disabling a Client.

When you enable a Client, if there are open licenses, and the Client is currently running, the Floating Server Manager will lease a license to that Client. If the Client isn't running, but there is a license available the next time it boots or activates the license, the Floating Server Manager will then automatically lease a license to that Client.

- Delete a Client.** You can only delete a Client after it's been disconnected from the Server, which happens when the Client deactivates the license as detailed above. Once the Client is disconnected from the Server, right click and choose Delete to deactivate the Client.

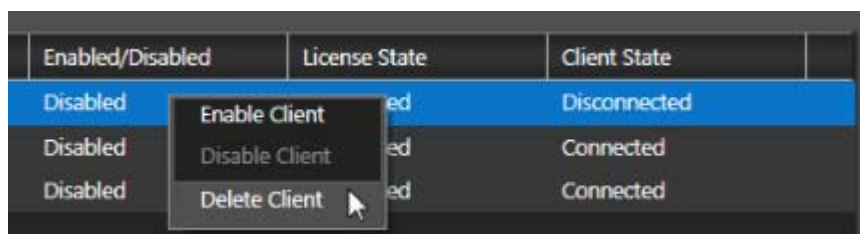


Figure 17. Deleting the Client.