

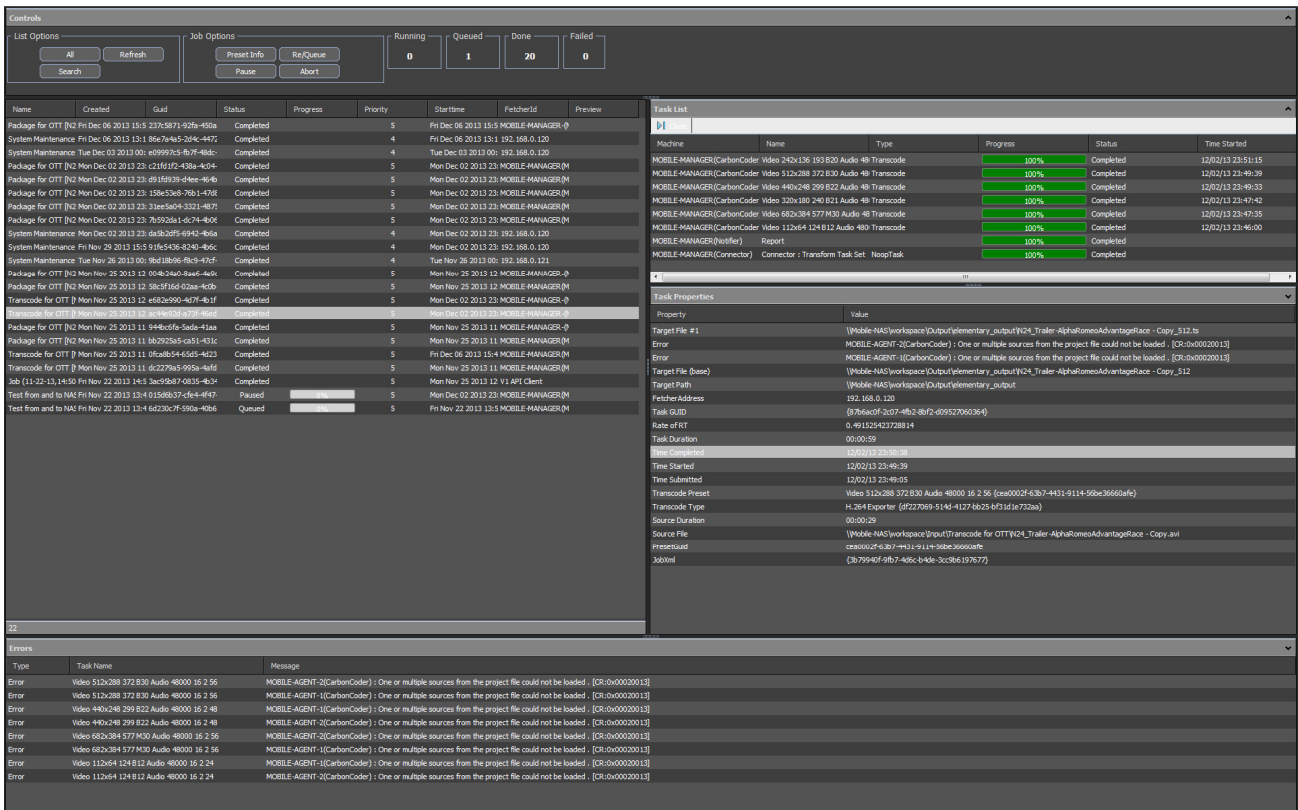
Harmonic (Rhozet) WFS WebGUI AddOn

About

This product is an AddOn to Harmonic's WFS transcoding farm management service. It adds a GUI that can be accessed either via a standard Web-Browser or via a Microsoft Windows Gadget that resides on the operators desktop.

Job Status	
Active:	Queued:
0	0
Fatal:	Completed:
145	1013

It gives access to all information and controls that are relevant to transcoding farm operators. Different access levels based on a user/group/role definition can be configured. A login dialogue grants access and manages the right options to be available. This said "customers" to the transcoding farm can be limited to watching the status while only operators can change priorities but just supervisors can stop and delete a job within Harmonic's ProMedia WFS.

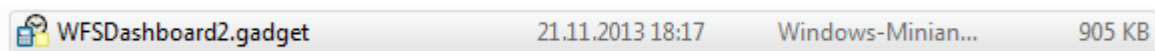


The screenshot displays the Harmonic WFS WebGUI interface. At the top, there are control buttons for 'List Options' (All, Refresh, Search) and 'Job Options' (Preset Info, Re/Queue, Pause, Abort). A status bar shows 'Running: 0', 'Queued: 1', 'Done: 20', and 'Failed: 0'. Below this is a table of jobs with columns for Name, Created, Gid, Status, Progress, Priority, Starttime, FetcherId, and Preview. The right side of the interface shows a 'Task List' with columns for Name, Type, Progress, Status, and Time Started. A 'Task Properties' panel is open, showing details for a specific task, including Target File #1, Error, Target File (base), Target Path, Fetcher Address, Task ID, Rate of RT, Task Duration, Time Started, Time Submitted, Transcode Preset, Transcode Type, Source Duration, Source File, Presestuid, and Jobuid. At the bottom, an 'Errors' section lists several error messages, such as 'MOBILE-AGENT-2(CarbonCoder) : One or multiple sources from the project file could not be loaded'.

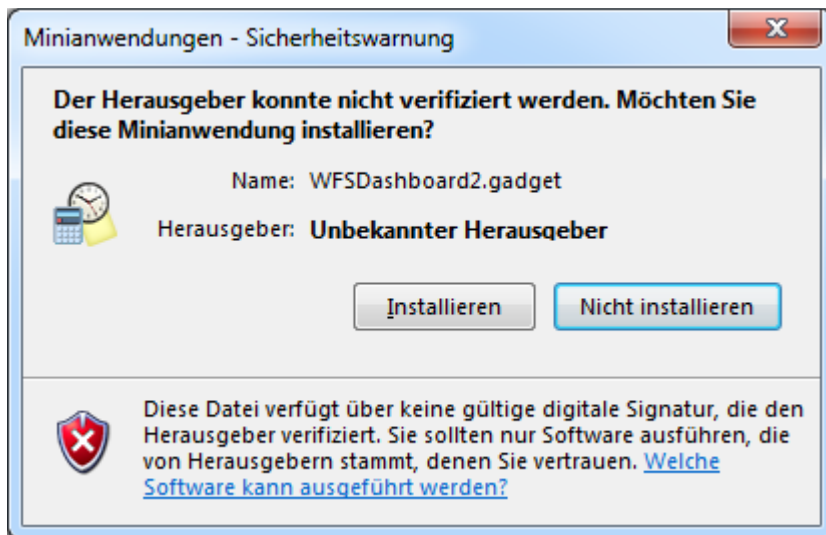
Installation – General

The WFS WebGUI gets delivered as a) Windows Desktop Gadget or as b) Webserver Application. The Proxy feature gets delivered as Tomcat Webserver Application in any case and is mandatory for the WebGUI to get access to the data from Harmonics WFS Controller.

- a) The installation of the **Windows Desktop Gadget** happens via a double click or right mouse button click + open option.

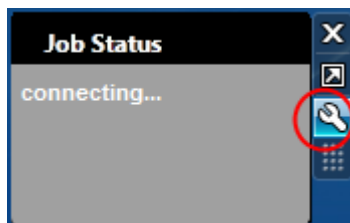


A pop up dialogue asks to confirm the installation.

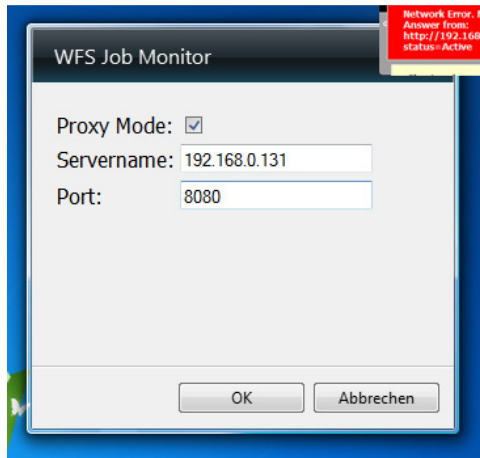


Immediately afterwards a new Gadget shows up on the Windows desktop.

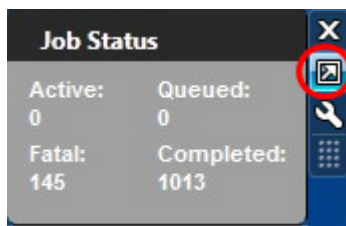
The tool symbol gives access to the **configuration** dialogue.



Please insert the IP Address of either the WFS Controller or x-dream-media's WFS Proxy (see below).



A successful configuration will result the Gadget shows the number of queued, running, successful and failed jobs. The arrow symbol gives access to the fully featured job monitor GUI.

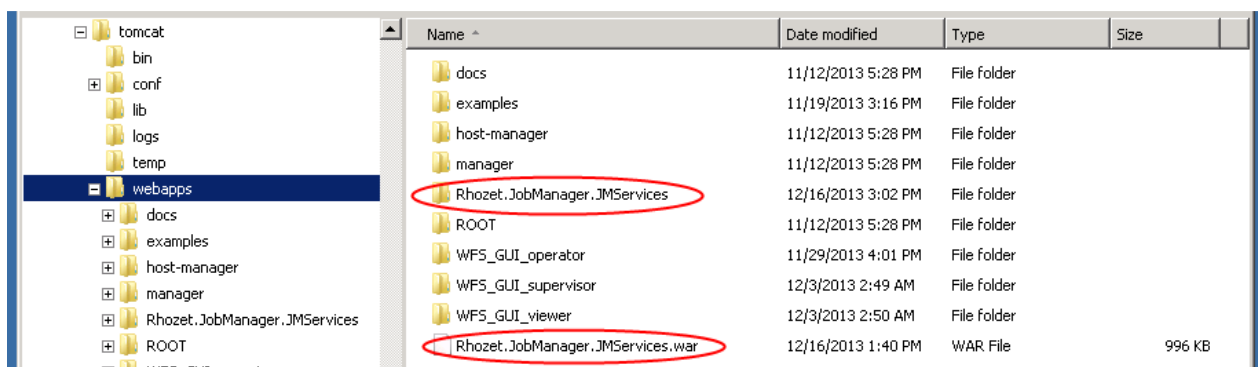


- b) The installation of the **WebGUI** requires a pre-installed and -configured Apache Webserver + a Tomcat Java Application server. This manual does not show how this is done. We do refer to the documentation from the Apache and Tomcat community.

The installation of the WebGUI happens fully automatically after copying the Tomcat Application file

 Rhozet.JobManager.JMServices.war	16.12.2013 13:40	WAR-Datei	996 KB
--	------------------	-----------	--------

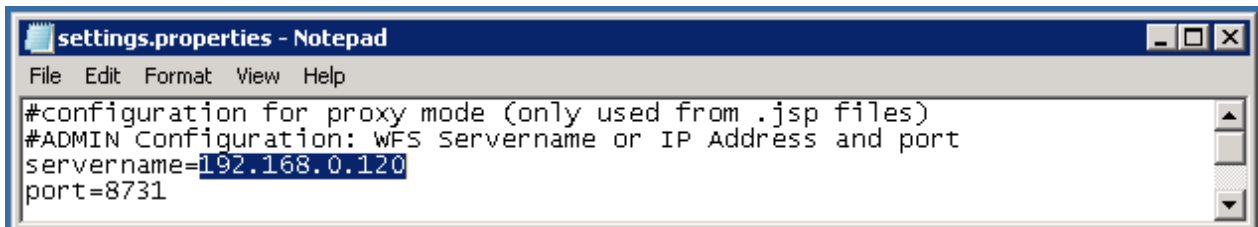
into Tomcats Application folder:



As result the Application files are being unpackaged.

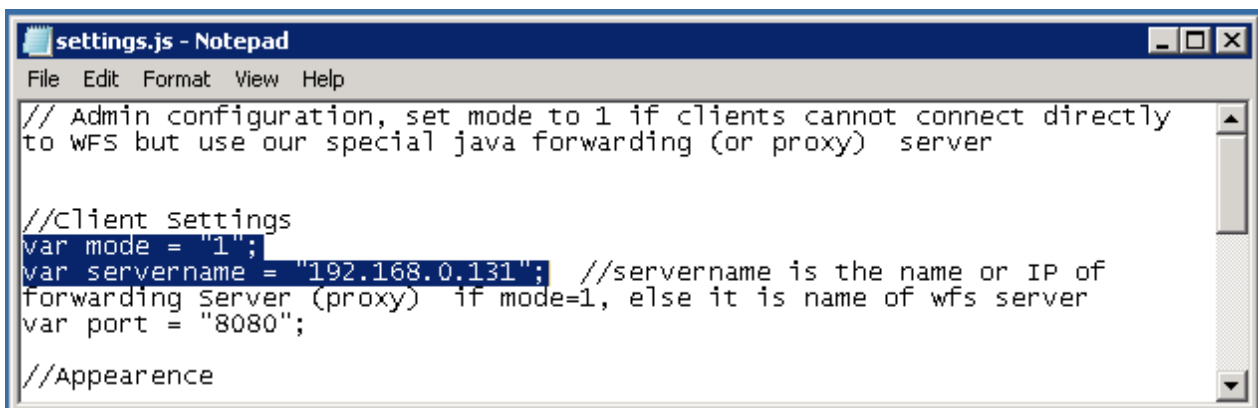
The **configuration** happens via two XML files:

“**settings.properties**” file defines the behaviour of the proxy feature. The relevant parameter to set is the IP Adress of the WFS Controller.



```
settings.properties - Notepad
File Edit Format View Help
#configuration for proxy mode (only used from .jsp files)
#ADMIN Configuration: WFS Servername or IP Address and port
servername=192.168.0.120
port=8731
```

“**settings.js**” file defines via what IP address or URL the GUI connects to the WFS Controller. This can be the WFS Controller. In this case the “mode” needs to be set to “0”. But usually it should be the Tomcat proxy service from above. In this case the “mode” needs to be set to “1” and the “servername” set to the WFS Controller IP address or URL.

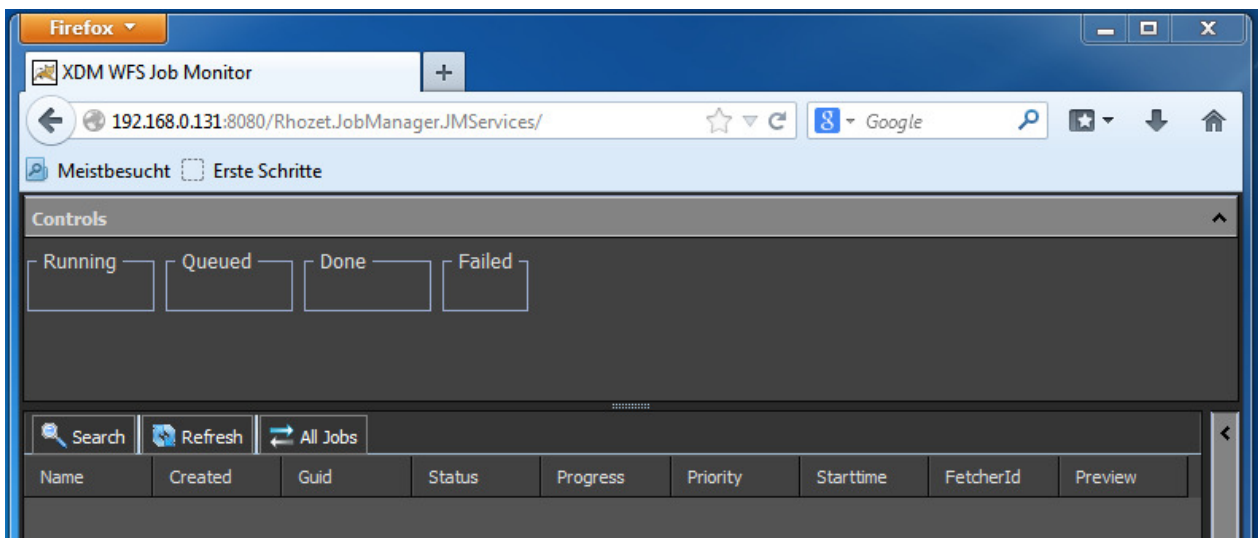


```
settings.js - Notepad
File Edit Format View Help
// Admin configuration, set mode to 1 if clients cannot connect directly
to WFS but use our special java forwarding (or proxy) server

//Client Settings
var mode = "1";
var servername = "192.168.0.131"; //servername is the name or IP of
forwarding Server (proxy) if mode=1, else it is name of wfs server
var port = "8080";

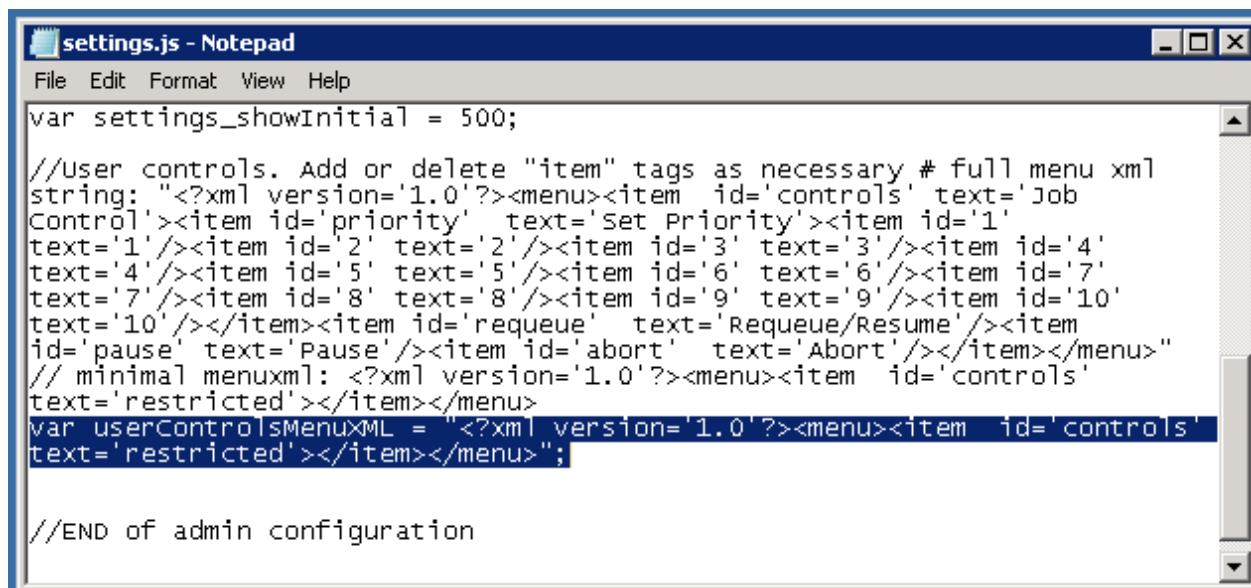
//Appearance
```

Afterwards the WebGUI can be access via it’s IP address or URL.



Managing User Control Restrictions

“settings.js” file defines what controls are available for the user by a right click on a particular job.



```

settings.js - Notepad
File Edit Format View Help
var settings_showInitial = 500;

//User controls. Add or delete "item" tags as necessary # full menu xml
string: "<?xml version='1.0'?><menu><item id='controls' text='Job
Control'><item id='priority' text='Set Priority'><item id='1'
text='1'></item><item id='2' text='2'></item><item id='3' text='3'></item><item id='4'
text='4'></item><item id='5' text='5'></item><item id='6' text='6'></item><item id='7'
text='7'></item><item id='8' text='8'></item><item id='9' text='9'></item><item id='10'
text='10'></item><item id='requeue' text='Requeue/Resume'><item
id='pause' text='Pause'><item id='abort' text='Abort'></item></menu>"
// minimal menuxml: <?xml version='1.0'?><menu><item id='controls'
text='restricted'></item></menu>
var userControlsMenuXML = "<?xml version='1.0'?><menu><item id='controls'
text='restricted'></item></menu>";

//END of admin configuration

```

The minimal set (no controls) for a “viewer” role is defined by the following definition:

```

var userControlsMenuXML = "<?xml version='1.0'?><menu><item id='controls'
text='restricted'></item></menu>";

```

For an “operator” role we do recommend the following settings:

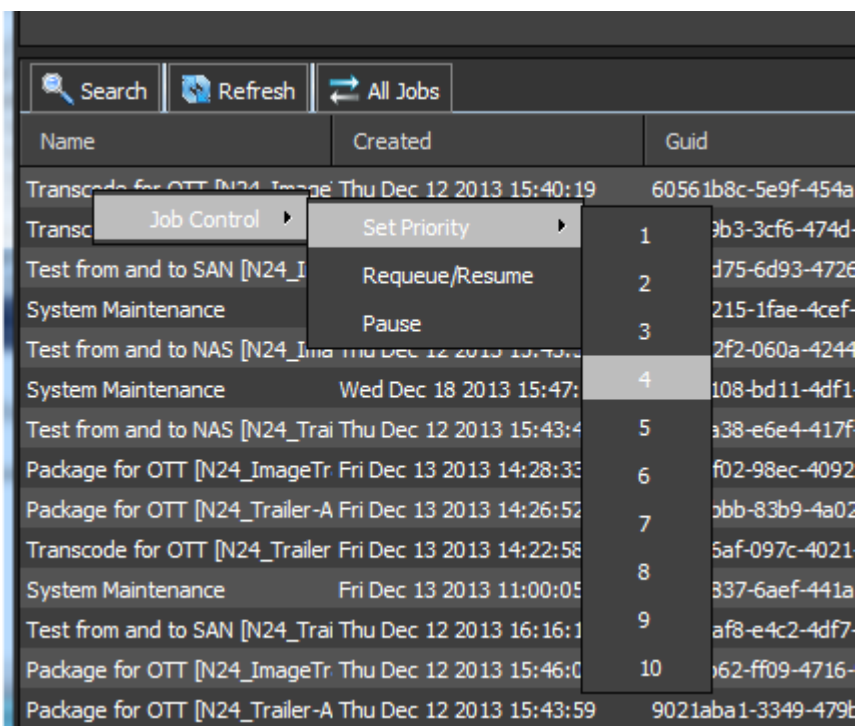
```

var userControlsMenuXML = "<?xml version='1.0'?><menu><item id='controls'
text='Job Control'><item id='priority' text='Set Priority'><item id='1'
text='1'></item><item id='2' text='2'></item><item id='3' text='3'></item><item id='4'
text='4'></item><item id='5' text='5'></item><item id='6' text='6'></item><item id='7'
text='7'></item><item id='8' text='8'></item><item id='9' text='9'></item><item id='10'
text='10'></item><item id='requeue' text='Requeue/Resume'></item></menu>";

```

And finally for a **“supervisor”** role the complete control set is made available via the following settings:

```
var userControlsMenuXML = "<?xml version='1.0'?><menu><item id='controls'
text='Job Control'><item id='priority' text='Set Priority'><item id='1'
text='1'></item><item id='2' text='2'></item><item id='3' text='3'></item><item id='4'
text='4'></item><item id='5' text='5'></item><item id='6' text='6'></item><item id='7'
text='7'></item><item id='8' text='8'></item><item id='9' text='9'></item><item id='10'
text='10'></item><item id='requeue' text='Requeue/Resume'><item id='pause'
text='Pause'></item><item id='abort' text='Abort'></item></menu>";
```

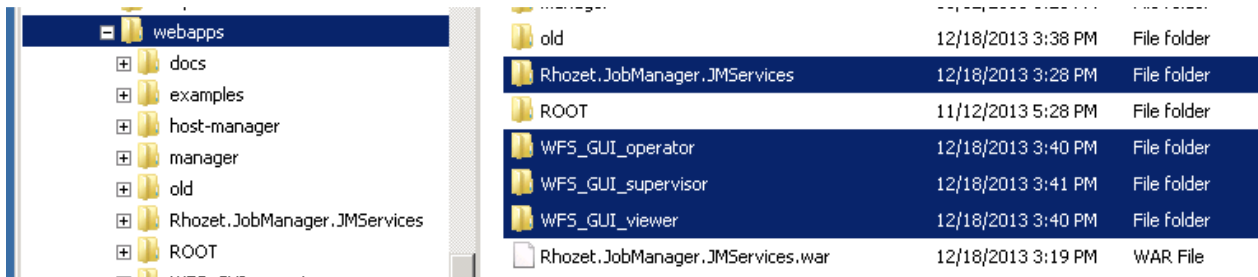


Managing Roles

Offering **different roles** at the same point in time is achieved by copying the WebGUI as often as roles to allow access. For easiness of access we recommend to rename the copies to names according to the roles.

Note: The WebGUI folder includes the WebGUI + the proxy service. But for easiness of rollout and cause of the small number of files we do recommend to copy the complete folder.

In our example with 3 roles for “viewer”, “operator” and “supervisor” as shown above we got the following folder structure:



Within the folders “WFS_GUI_viewer”, “WFS_GUI_operator” and “WFS_GUI_supervisor please adjust the available controls as shown earlier.

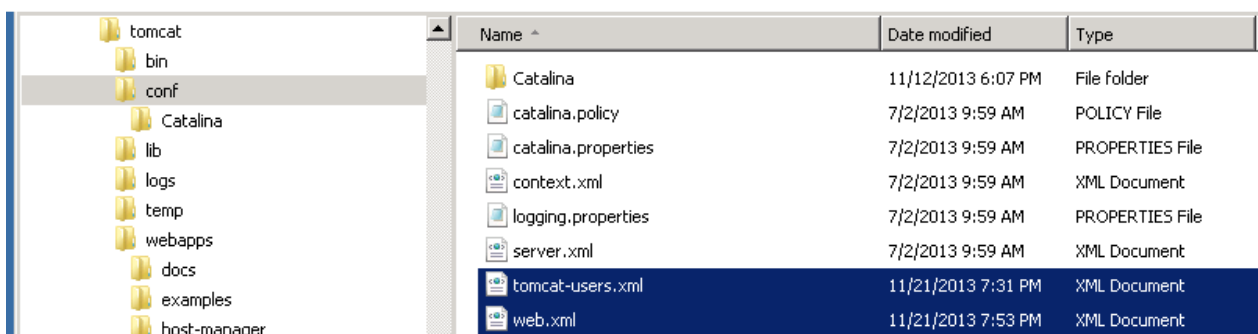
The three different GUIs are now accessible via the following URLs:

http://[servername or IP]:8080/WFS_GUI_viewer/
 http://[servername or IP]:8080/WFS_GUI_operator/
 http://[servername or IP]:8080/WFS_GUI_supervisor/

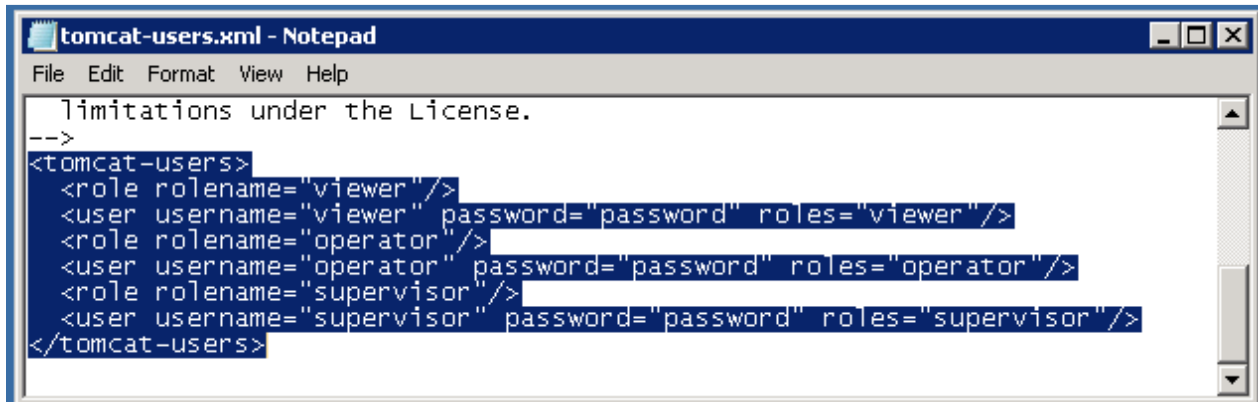
Managing Access Restrictions

So far the users can access the role based GUIs without any password protection. The access restriction can be added via Tomcats user management.

Two files are relevant to do so: “tomcat-users.xml” and “web.xml”. They can be found in the “conf” folder within the tomcat installation folder.



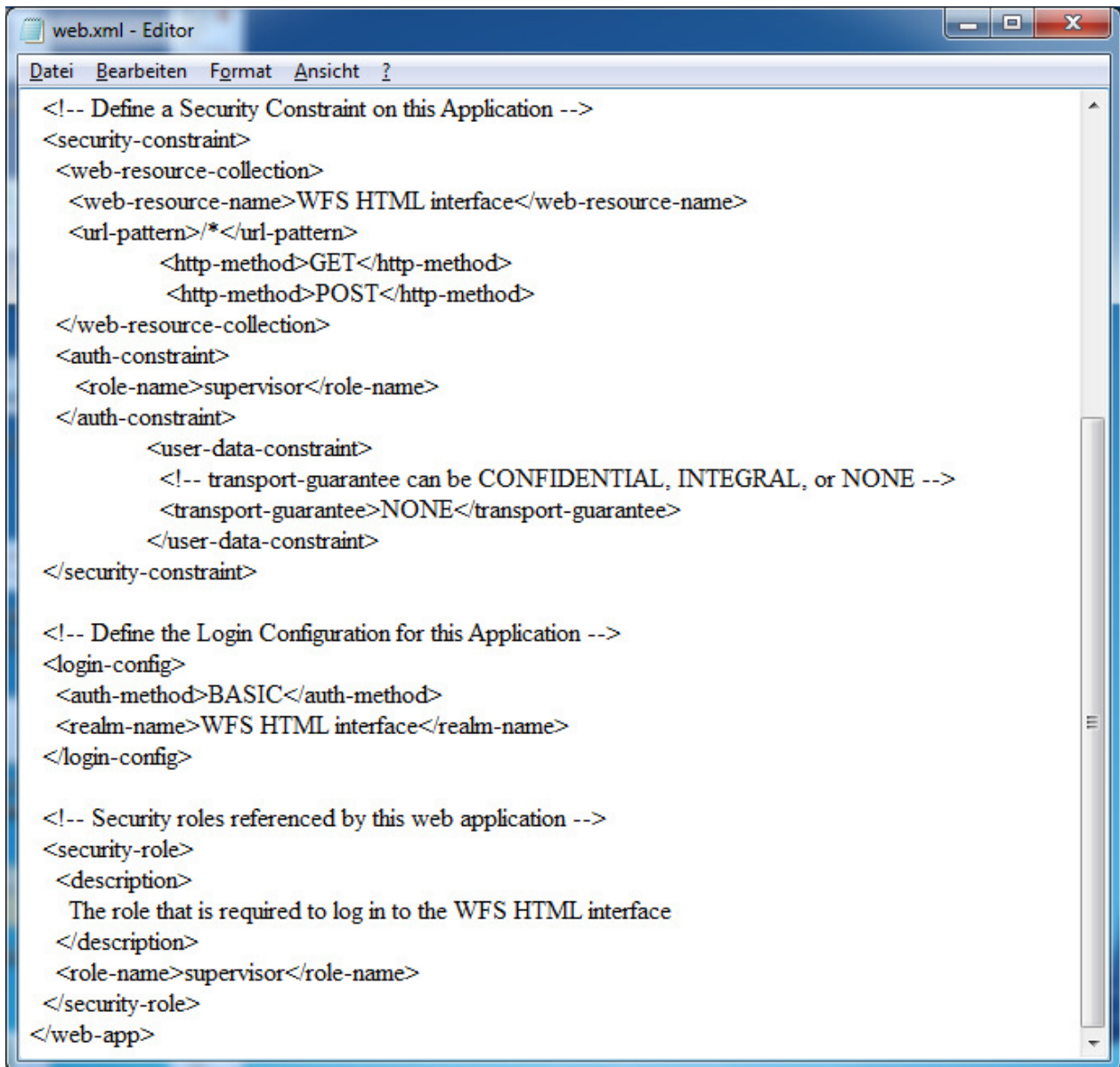
The “tomcat-users.xml” file defines the roles, usernames and passwords as follows:

A screenshot of a Notepad window titled 'tomcat-users.xml - Notepad'. The window contains XML code defining roles and users. The code is as follows:

```
limitations under the License.
-->
<tomcat-users>
  <role rolename="viewer"/>
  <user username="viewer" password="password" roles="viewer"/>
  <role rolename="operator"/>
  <user username="operator" password="password" roles="operator"/>
  <role rolename="supervisor"/>
  <user username="supervisor" password="password" roles="supervisor"/>
</tomcat-users>
```

The “web.xml” within the “WEB-INF” folder as subfolder of each “webapps” folder defines the role that may access such folder.

The coded on the following page shows the definition or the “supervisor” user.

A screenshot of a text editor window titled 'web.xml - Editor'. The window contains XML code for a web application's security configuration. The code includes comments and tags for defining security constraints, login configurations, and security roles. The code is as follows:

```
<!-- Define a Security Constraint on this Application -->
<security-constraint>
  <web-resource-collection>
    <web-resource-name>WFS HTML interface</web-resource-name>
    <url-pattern>/*</url-pattern>
    <http-method>GET</http-method>
    <http-method>POST</http-method>
  </web-resource-collection>
  <auth-constraint>
    <role-name>supervisor</role-name>
  </auth-constraint>
  <user-data-constraint>
    <!-- transport-guarantee can be CONFIDENTIAL, INTEGRAL, or NONE -->
    <transport-guarantee>NONE</transport-guarantee>
  </user-data-constraint>
</security-constraint>

<!-- Define the Login Configuration for this Application -->
<login-config>
  <auth-method>BASIC</auth-method>
  <realm-name>WFS HTML interface</realm-name>
</login-config>

<!-- Security roles referenced by this web application -->
<security-role>
  <description>
    The role that is required to log in to the WFS HTML interface
  </description>
  <role-name>supervisor</role-name>
</security-role>
</web-app>
```

Version

Version 1.1

Copyright © 2015 x-dream-media GmbH